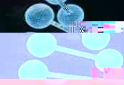




Institute for Health & Equity, Division of Biostatistics presents

Sample Size & Power Determination for Common Nonlinear Regression Models with Potential Stratification

By: Mike Martens, PhD



JOIN US!

Tuesday, Oct. 17, 2023 3:00 - 3:30 PM
/ RFD WOL (R%Q0 0

6DPSOH VL]H DQG SRZHU GHWHUPLQDWLRQ DUH FUXFLDO GHVLJQ F
WUHDWPHQWV RU ULVN IDFWRUV RQ DQ RXWFRPH 2WKHU SURJQRV
ZKHQ FRQGXFWLQJ WKLV HYDOXDWRQ 5HJUHVVLQJ PRGHV DUH F
UHJUHVVLQJ SDUDPHWHUV %XW FRUHHODWLRQV PD\ H[LVW EHWZH
FRPSOLFDELQJ VDPSOH VL]H SRZHU FDOFXODWLRQ :H SURSRVH D
SRZHU GHWHUPLQDWLRQ WKDW PD\ EH DSSOLHG IRU FRPPRQ\ XVH
RUGLQDU\ DQG VWUDWLILHG YHUVLRQV RI WKH &R[DQG)LQH *UD\ F
WKH IRUPXODV\ DFFXUDF\ LQ SURGXFLQJ VDPSOH VL]HV WKD.W PHH



Mike Martens, PhD



Please contact Evan Heffelfinger for additional event information at ehffelfinger@mcw.edu